



FirstStateChapter

DELAWARE

A Chapter of the Association of Legal Administrators

BlueHenNews



FLASH BACK TO FALL 2019

ALA BOARD MEMBERS AT THE HALF DAY SEMINAR

VOLUME II

ISSUE 25

FALL 2020



Inside This Issue

First State Chapter Board Members	3
President's Message	4
Business Partner Spotlight	6
Bragging Rights	7
ALA Vitrual Events	8
First State Chapter Business Partners	9-10



FirstStateChapter DELAWARE

A Chapter of the Association of Legal Administrators

First State Chapter Board

Rachel Nuzzi, President
Telephone: 302-472-1732
ran@maronmarvel.com

Bill McCall, Vice President
Telephone: 302-651-7823
mccall@rlf.com

Brian Lamb, Treasurer
Telephone: 302-429-4244
blamb@bayardlaw.com

Christina Oaddams, Secretary
Telephone: 302-552-4379
CMOaddams@MDWCG.com

Garry Quell, Past President
Telephone: 302-472-1732
gquell@schmittrod.com

Editorial Board

Shelly Daly

Julie Dubreuil

Denise Frawley

Susan Holton

Deborah McKinney

Kellie Snyder-Roncace

Fall 2020 Issue Editor:

Page Chase

First State Chapter's Website:

www.firststateala.org

Please forward all article submissions
for future newsletters to:

pchase@hfddel.com

President's Message



Summer has come and gone, and while my message from June had hopes of us reconnecting in person this Fall, unfortunately, barring some miracle, it looks like our chapter will remain remote until Spring 2021. While it's always better when we can physically get-together, I think we have had some great remote events – education sessions, roundtables, the PennsWood wine tasting – and there is still more fun to come! I can't wait for our virtual campfire and Halloween party on

October 28th – COSTUMES STRONGLY ENCOURAGED! We also have a very interesting and engaging education session planned for November 10th on Memory Power. I hope to “see” you at both.

I know this pandemic has been exhausting for all of us (both personally and professional), especially given our roles within our organizations. I remain grateful every day that I have such a wonderful network of fellow administrators to rely on, bounce ideas off of, ask questions to, and even escape reality with for a bit (more wine and cheese please). As always, I encourage you to provide suggestions for any future events and education topics you like to see for the chapter.

-Rachel Nuzzi

Every year the First State Chapter of the Association of Legal Administrator's participates in a charitable giving initiative. This year, due to the COVID pandemic, we wanted to help essential workers who didn't have the luxury of working from home and instead had to work on the front lines day after day, risking the health and safety of themselves and their families. Through the non-profit organization *Give Essential* our Chapter was matched with 7 local individuals who needed help. The individuals included a registered nurse, an EMT, a firefighter, a security officer, an electrician, a non-profit housing worker, and a mail carrier. Most of these individuals needed help purchasing COVID protection like gloves and masks, as well as cleaning supplies. As a chapter we donated over

\$1,500 worth of supplies to this worthy cause. If you want to learn more about *Give Essential*, check out their website - www.giveessential.org.





SERVICE OF PROCESS



- Nationwide Network
- Rush Services
- Court Pickups
- Printing and Preparation
- Staff of Approved Servers
- Available 24/7
- Serving all of Delaware



parcelsinc.com



sop@parcelsinc.com



302.254.2134

Business Partner Spotlight



FirstStateChapter
DELAWARE
A Chapter of the Association of Legal Administrators

BAYSHORE



Bobby Vandenbraak
Project Management & Business Development

Bayshore Transportation and Records Management is a locally-owned agent for Allied/North American Van Lines. We are also a NAID Certified Records Management company. My role is to onboard new accounts and assist with any services they may need as a Bayshore client. I am involved in all aspects of our projects from start to finish. I have been in this role for almost three years. I started at Bayshore in 2008 as college summer job and have had many roles in the organization since then, including warehouse labor and truck driver. I went to school locally at Brandywine High School and Wilmington University.

Bayshore is woman-owned business and has remained family operated since they opened the doors. Our services include household goods moving and storage, commercial relocation and storage, and records management. As a records management group, we stand out because we have the capacity and facilities to compete with large, international corporations in the industry for the Delaware market. Our clients receive the care and attention you can only get from a local business.

Because of the culture and structure that Bayshore ownership has built, I am fortunate enough to be involved in some exciting commercial developments in the area. I have taken pride in watching so many great things happen in Delaware recently because Bayshore was able to play a role in these developments. Whether it's receiving, storing, or delivering items for new hotels, or office buildings, or providing secure storage and shredding for a growing business, we love being part of the process.

I find the topics that I discuss most with Bayshore customers are safety and security. They come to us with concerns regarding the need for a safe place to store their goods or documents, and the safest way to transport them. This is a need that will always be around in commercial business. These concerns are relaxed once they tour our warehouse and meet our staff.

Another large challenge right now is how our customers are protecting their staff and clients as a response to COVID-19. We have been assisting with office moves for companies and firms that are creating new floorplans in an effort to get people back to work.

At Bayshore Transportation and Records Management, our employees are cross trained in office moving and records management. Working with law firms allows our crews to utilize both skill sets. Since our crews are trained in both outlets, all law firm associates can rest assured that their information, along with their client's information, is being handled safely and efficiently.

Bayshore is involved with many groups and organizations that support business to business interaction. Of all the groups we are associated with, I believe ALA makes the most effort to promote interaction between members and business partners. These opportunities are much appreciated.

Bragging Rights



12 *Years*
in a row
2009-2020

Congratulations to Belfint Lyons & Shuman, PA on being awarded the 2020 Top Workplace honor by The News Journal for the 12th consecutive year.

Congratulations to Gary Nantais, Business Partner, who is expecting his first grandchild in January 2021! It's a boy!!

IT Solutions that Work for Your Business

Promotional Credit of up to \$15,000 towards IT Services with a 3-Year agreement*

> MANAGED DESKTOP & SERVERS

Unlimited Remote Management of your environment and backups.

> OFFICE365 & CLOUD

The company is a Tier 1 Microsoft Reseller and can help your firm transition to the Cloud and simplify your business processes.

> PROFESSIONAL ON-SITE SERVICES

Our professional technicians will be on site in under 4 Hours or less in an emergency.

> NETWORK SECURITY & COMPLIANCE

Let CloudScale365 professionals secure your environment from the multiple threats on the Internet.



CLOUDSCALE 365™

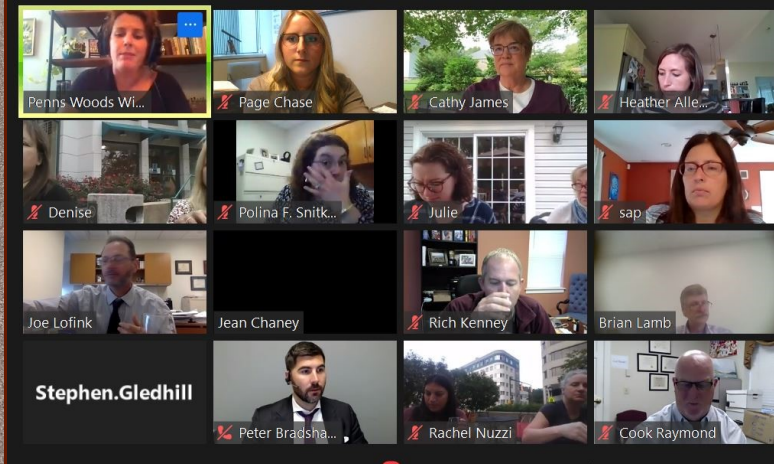
131 Continental Drive, Suite 410,
Newark, DE 199713

* Call 302.428.1300

www.cloudscale365.com

Virtual Wine & Cheese Tasting (Penns Woods Winery)

The First State Chapter hosted a Virtual Wine & Cheese Tasting presented by Penns Woods Winery on September 16. We had a great turn out for the event and enjoyed tasting all of the offerings.



We are looking forward to our next virtual event on October 28, "Camp Fire and Halloween Party". Can't wait to see you there!



Business Partners



FirstStateChapter

DELAWARE

A Chapter of the Association of Legal Administrators

Caesar Rodney Level



**DIAMOND STATE
FINANCIAL GROUP**

Peter Bradshaw, CPFA



Parcels



INSURANCE
SAFETY
RISK MANAGEMENT

Brandywine Level



CLOUDSCALE 365™



iSolved®



Blue Hen Level

Caffé Gelato
RESTAURANT
+ CATERING



ITSolutions™
Thinking ahead.

JUSTLEGALINC.
Attorney Placement ⚖️ Legal Support Staffing



milliCare®
FLOOR & TEXTILE CARE

BAYSHORE



First State Chapter Business Partners

Christiana Level

